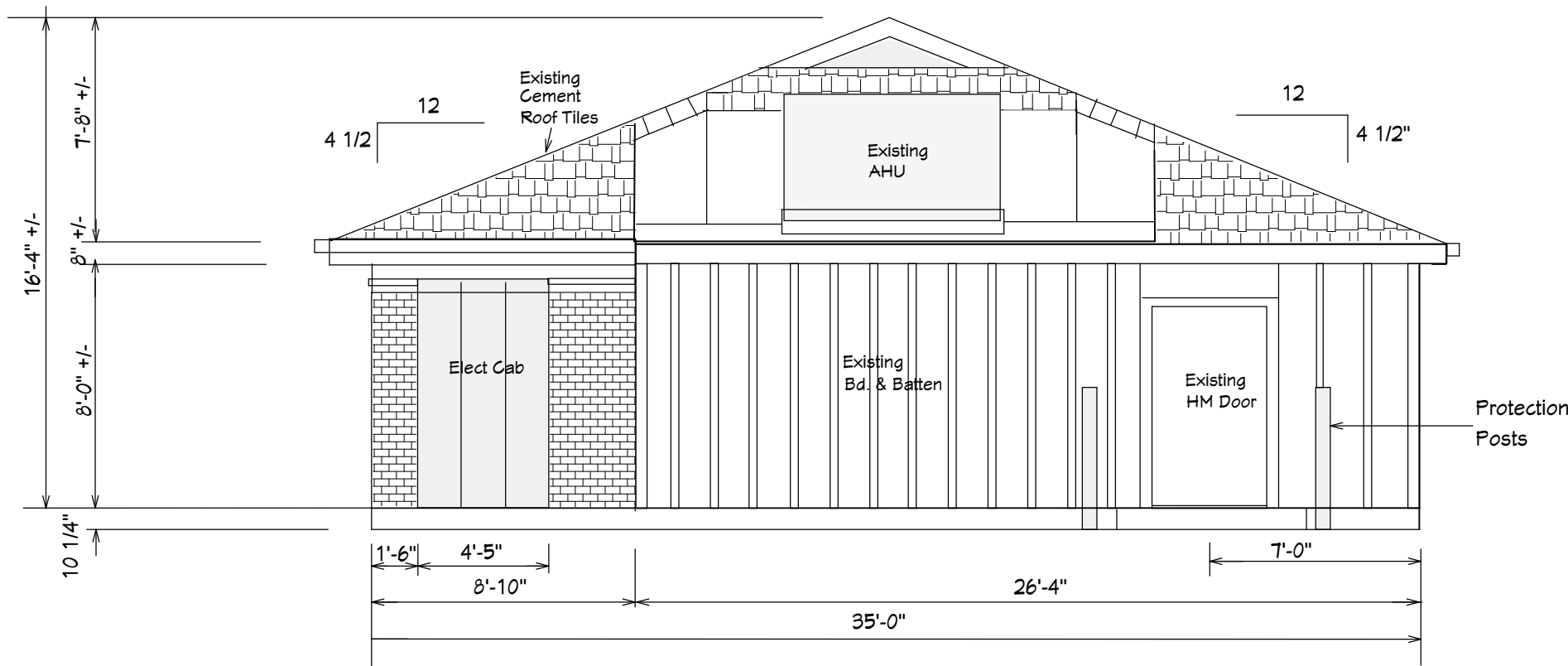


New Brick Walls Stepped Back      New 2nd Exit w/ New Brick and Parapet      Existing Bd & Batten Siding      **NORTH ELEVATION**      *OPTION A - February 1, 2023*  
 3/16" = 1'-0"



**SOUTH ELEVATION**      *OPTION A - Feb. 1, 2023*  
 3/16" = 1'-0"

1235 South Mission Rd.  
 Fallbrook, CA.